



MONTHLY MEMBERSHIP PROGRESS REPORT

District 23 C

Results as of: 5/31/2016

GMT: ED LECIUS

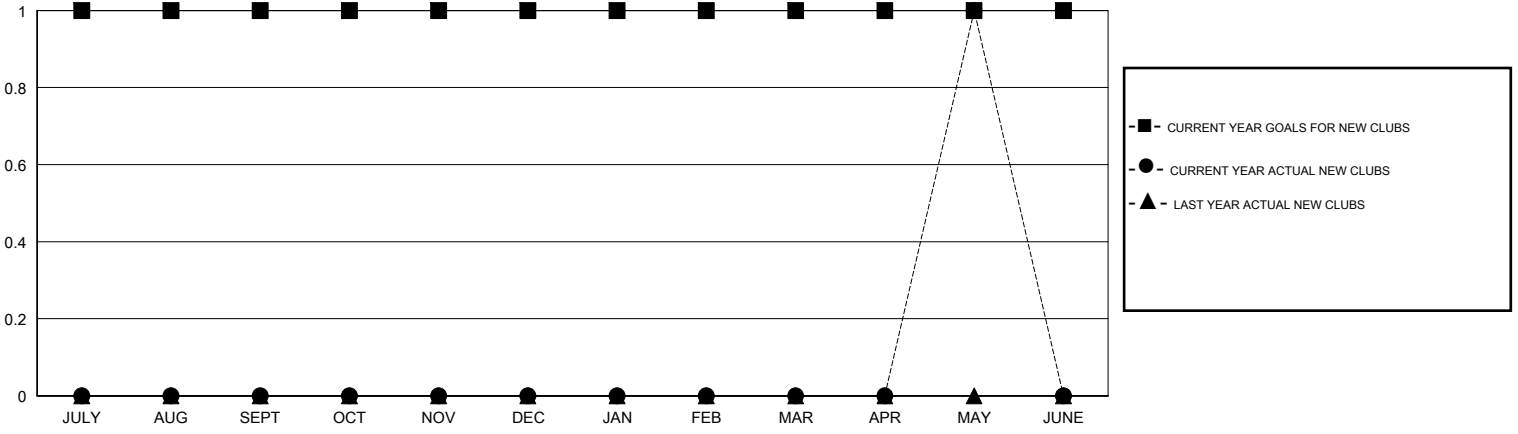
LOCATION CONNECTICUT

GMT CA 1

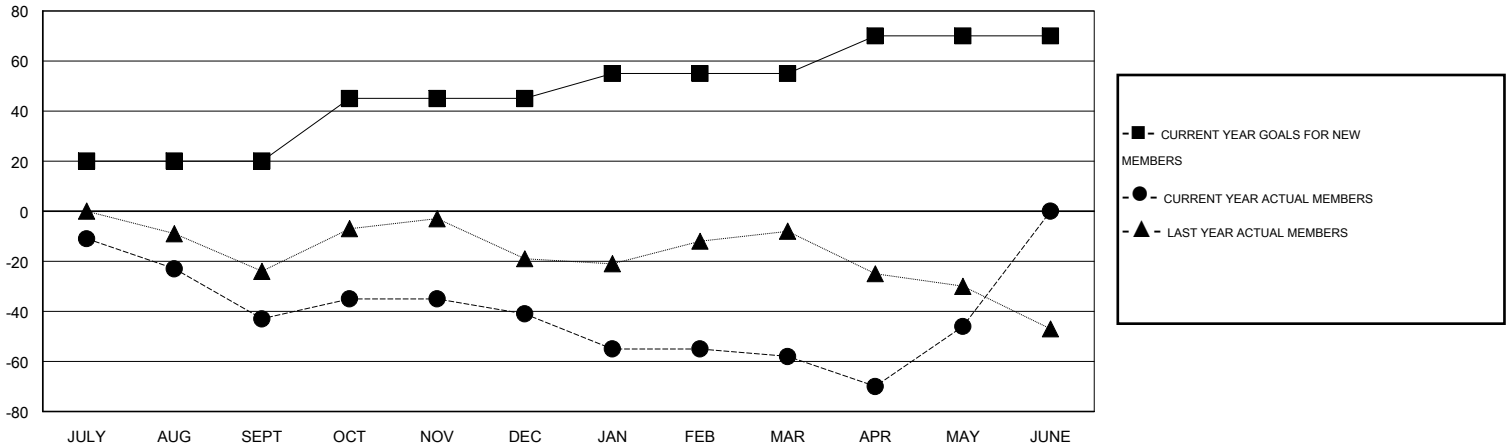
Clubs				
RESULTS FOR 2015-2016				
QUARTER	NEW CLUB GOAL	NEW CLUBS	DROPPED CLUBS	NET GAIN/LOSS
JULY/AUG/SEPT	1	0	0	0
OCT/NOV/DEC	0	0	0	0
JAN/FEB/MAR	0	0	0	0
APR/MAY/JUNE	0	1	1	0

Members				
RESULTS FOR 2015-2016				
QUARTER	NEW MEMBER GOAL	CHARTER AND NEW MEMBERS ADDED	DROPPED MEMBERS	NET GAIN/LOSS
JULY/AUG/SEPT	20	14	57	-43
OCT/NOV/DEC	25	50	48	2
JAN/FEB/MAR	10	32	49	-17
APR/MAY/JUNE	15	46	34	12

GOALS AND ACTUAL NEW CLUBS CUMULATIVE



GOALS AND ACTUAL MEMBERS CUMULATIVE



DROPPED CLUBS: 1

40 CLUBS OF 53 ADDED 1 OR MORE NEW MEMBERS

GENDER DISTRIBUTION	
MALE	1,118 (65.61%)
FEMALE	586 (34.39%)

DROPPED MEMBERS	
DECEASED	21
CLUB CANCELLED	1
OTHER	165
TOTAL	187

[CLICK HERE FOR HEALTH ASSESSMENT DATA](#)

FAMILY UNIT MEMBERS	303
HEAD OF HOUSEHOLD	146
NON-HEAD OF HOUSEHOLD	157